



CHIULISTA

S E R V I C E S , I N C .

A YULISTA HOLDING SUBSIDIARY

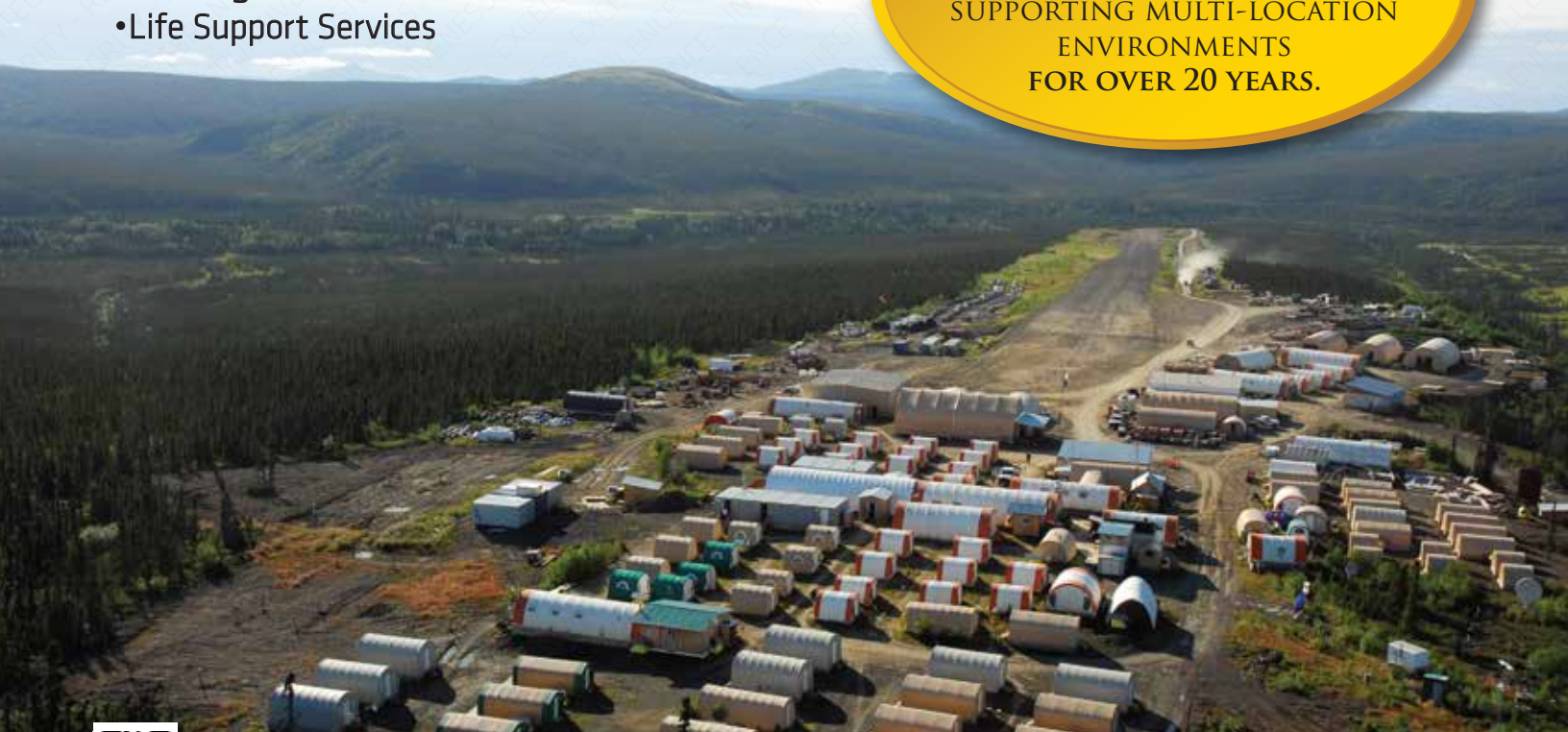
REMOTE CAMP SERVICES SUPPORT

Chiulista Services, Inc. (CSI) is a wholly owned subsidiary of Yulista Holding, LLC under our parent company, Calista Corporation. Calista serves over 13,000 Alaska Native shareholders in Southwest Alaska. CSI strives to emulate the values and practices of its parent corporation by promoting local hire and conservation of resources.

Our functional support areas for remote camp services are:

- Large Project Management & Execution Experience (50M+)
- Remote Site Work & Infrastructure Experience
- Operations & Maintenance
- Environmental Compliance
- Logistics & Supply Chain Management
- Security (Armed & Unarmed)/ Video Surveillance
- Catering/Food Services
- Life Support Services

PROVIDING
EXCEPTIONAL PERFORMANCE
ON LARGE VOLUME & HIGH
CEILING CONTRACTS
SUPPORTING MULTI-LOCATION
ENVIRONMENTS
FOR OVER 20 YEARS.



ABOUT US

CSI combines its experienced management team, highly-skilled workforce, and substantial corporate and financial resources to provide services that offer a wide range of professional and technical services for U.S. armed services, other government agencies, and commercial industries.

THE CSI ADVANTAGE

- Small Disadvantaged Business with a Proven Track Record Fully Capable of Providing Facility Maintenance Operations
- Low Risk, High Quality
- Ability to Successfully Work in Extreme Weather Conditions in Remote Areas
- Financial Stability to Accomplish Work Required
- Vast Corporate Reach Back Provided by Holding & Parent Companies

OPERATIONS & MAINTENANCE

- Facilities & Ground Maintenance
- Warehousing
- Power Generation Maintenance
- Catering/Food Services
- Administrative Support
- Long-Term Custodial Management
- On-Call Short-Term Custodial Services
- Security
- Fuel Distribution
- Safety
- HAZMAT Management
- Civil Engineering
- Real Property Management
- Transportation
- Video Teleconferencing (VTC) Support
- Airfield Management
- Housing Solutions



LOGISTICS & SUPPLY CHAIN MANAGEMENT

- Training
- Shipping/Receiving
- Aviation Maintenance Support
- Inventory Control
- Warehousing



MANUFACTURING

- Mechanical Fabrication
- Electrical Assembly
- Pneumatic and Hydraulic Repairs
- Design and Setup of Right-sized Project Support Capability
- Responsive One-off Builds and Prototypes

